

WIRELESS TV SPEAKER

INSTRUCTION MANUAL

Model: **TV6000**



Wireless Speaker

Thank you for purchasing the **Wireless TV Speaker**.

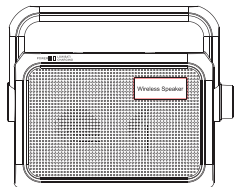
Please read this operating guide carefully before use and keep it for future reference. If you have any questions, please feel free to contact our Customer Service department

IMPORTANT SAFETY INSTRUCTIONS

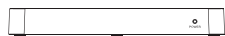
Please read these instructions carefully before using the Wireless TV Speaker.

- Always keep the system dry. Do not immerse in water.
- For your safety, do not attempt to open the unit or battery compartment. Attempting to open or opening the battery compartment violates your warranty.
- The Wireless TV Speaker uses a lithium ion battery. Please observe the safety and handling instructions for the lithium ion battery. Please dispose of the unit/used batteries properly, following any local regulations.
- Do not dispose of the unit/used batteries in the household trash. Do not incinerate. Take the equipment to a nearby recycle center.
- Do not unplug by pulling on the cord. To unplug, grasp the plug, not the cord. Unplug from outlet when not in use and before servicing or cleaning. Do not operate any device with a damaged cord or plug, or after the device malfunctions, or is dropped or damaged in any manner. Return the device to the nearest authorized service facility for examination, repair or electrical or mechanical adjustment.
- This device is intended for home and personal use only.

PACKAGE CONTENTS



1 Wireless Receiver (Speaker)



1 Transmitter Base



1 Audio Switch Cable

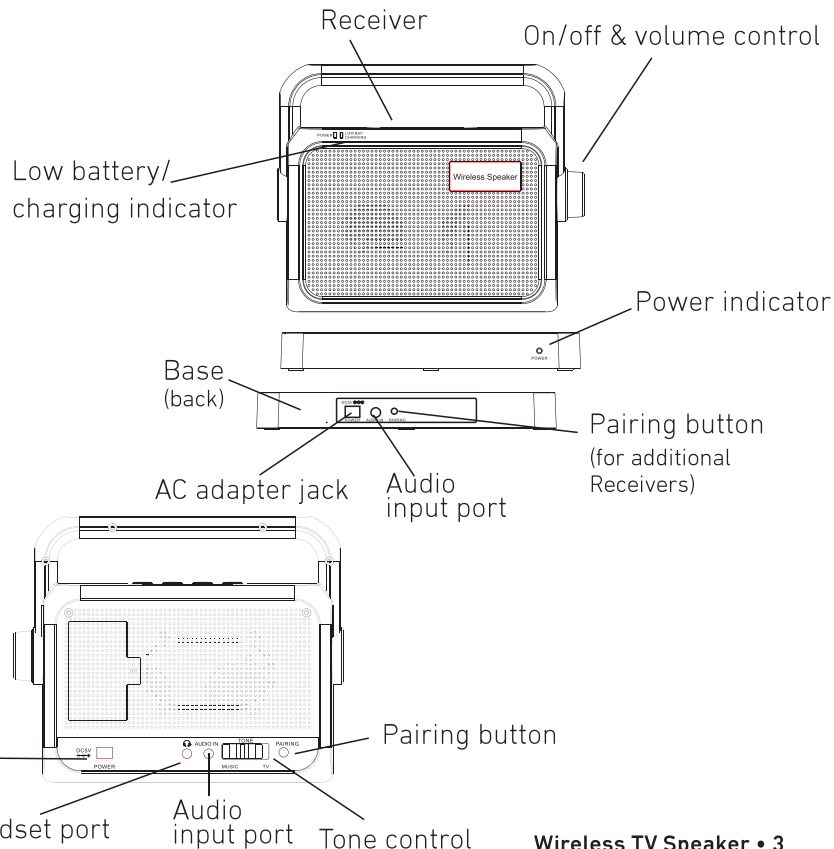


1 AC Adapter



1 Audio Cord

FEATURES IDENTIFICATION



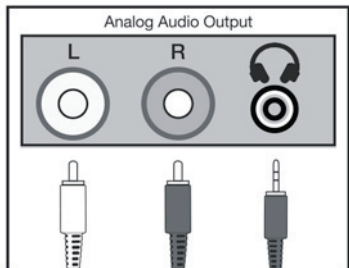
CONNECTION AND SET UP

Select an Audio Connection

Locate the audio out connector on the back of your TV or the headphone jack.

Analog Audio Output

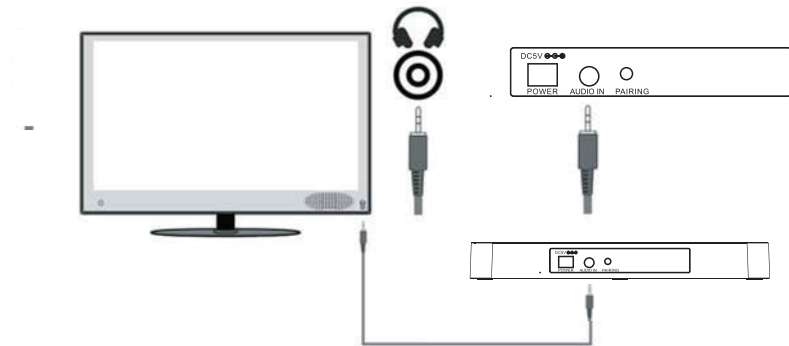
For analog audio output, connectors use the included audio cords.



Headphone Jack

You may also connect the Wireless TV Headphones via your TV's headphone jack. Use the provided audio cable and connect the base of the Wireless TV Speaker to your TV as shown below.

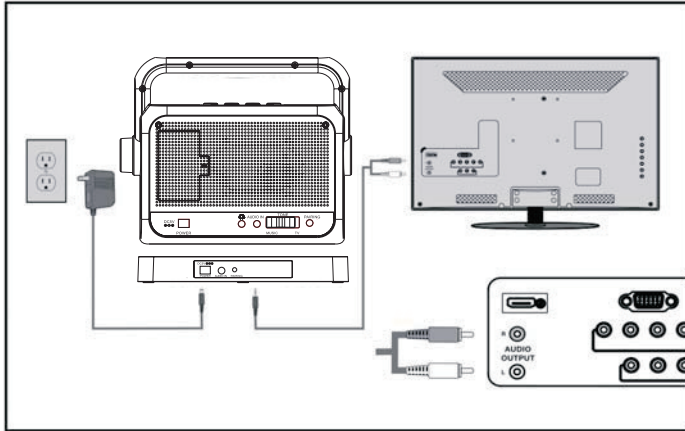
PLEASE NOTE: In most cases, the TV speaker volume will be muted when using this type of connection.



For TVs with Audio-Out Ports (RCA type)

If your TV has audio output RCA type ports on the back of your TV, it is an analog output. Use the provided audio cable and connect the base of the Wireless TV Speaker to your TV as shown below.

PLEASE NOTE: In most cases, TV speakers are NOT muted with this type of connection.



Placement of Transmitter Base

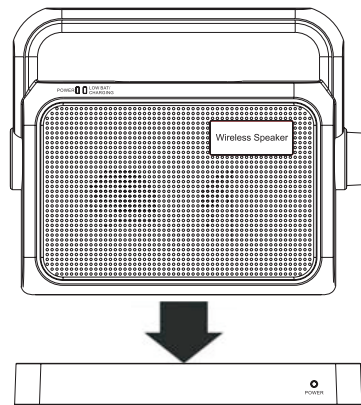
For best results, place the Transmitter Base on top of your TV stand, or on top of your TV, as shown below.



Battery Charging

Place the receiver on the base (as shown) for charging for 6+ hours before first use. During charging, the Low Battery/Charge indicator blinks. When it is fully charged, the indicator light will stop blinking and stay steadily lit. A fully charged battery will give you up to 8 hours of listening time.

When the receiver is not in use or when the Low Battery indicator blinks, place the receiver on the base for recharging.



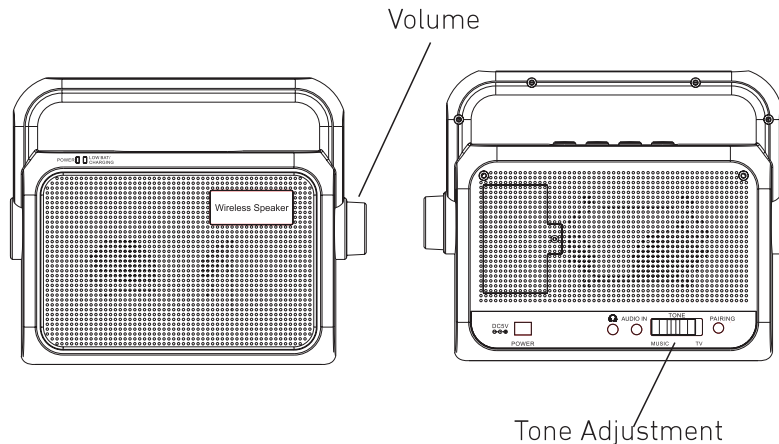
OPERATION

On/Off, Volume and Tone Control

1. Rotate the knob to turn receiver On or Off and to adjust its volume.
2. You can turn your TV speaker to Low or to Off. On some TVs, you may need to use your remote to go into the TV's Menu to achieve an optimal audio/speaker setting. Please refer to your TV user manual for details.
3. To conserve battery power, the receiver will shift into standby mode if no audio signal is received from the base (after your TV is turned off) for a period longer than three minutes. The volume ON/OFF indicator will be off during this standby time. When audio signal is received, the receiver will re-activate.

NOTE: If the receiver has hibernated too long and missed the contacts with the base, rotate the knob, turn off the receiver and then turn the receiver back on again to re-sync with the base.

4. Set the Tone Control to a position that enables you to hear and understand the dialog best.



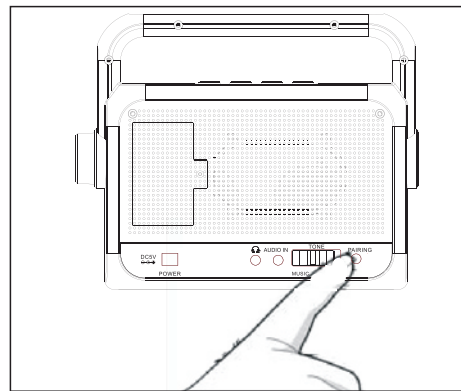
Pairing Additional Receivers

You can add up to 50 receivers to work with your base. Each added receiver, must be "paired" with the base as follows:

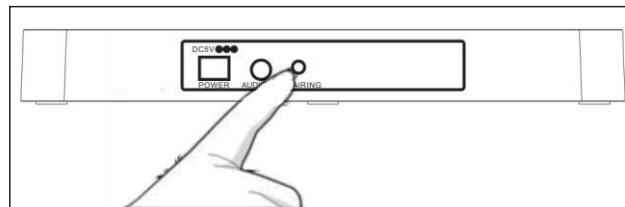
- Make sure your new receiver is fully charged.
- Make sure your current base and receiver is working properly and audio is playing on the receiver.
- Continue the audio playing to the base and receiver.

Pairing Additional Receivers (continued)

1. Turn the new receiver ON.
2. Press and hold (about 5 seconds) the PAIRING button on the bottom of the receiver until the ON/OFF indicator starts blinking. Pairing period is approximately 20 seconds.
3. Press and hold (about 3 seconds) the PAIRING button on the back of the base until the power indicator starts blinking. It will start pairing with the new receiver.
4. As soon as pairing is successful (less than 2 seconds), the new receiver's ON/OFF indicator will stop blinking, and audio sounds will be played within 5 seconds.
5. Repeat these steps again if pairing is not successful.



Bottom
of receiver
(Speaker)



Back of
transmitter
(Base)

Using Headphones

Plug your headphones into the headphone jack as shown. No sound will be emitted from the speakers. Adjust the headphone volume by rotating the volume knob.

TROUBLESHOOTING

- ***No sound from the receiver***

Check all connections to ensure that all the cords are firmly connected at the back of the base and TV. Also, confirm that the receiver is not more than 100 feet away from the base.

- ***There is sound from the TV speaker, but no sound from the receiver***

Check your TV speaker setting by going into the TV Menu, using your TV remote and ensuring the TV is sending audio signals to the base.

- ***The Low Battery/Charging indicator keeps blinking on the receiver***

This indicates that the battery is low and needs to be placed on the base for recharging. When fully charged, the blinking will stop (in about 3 hours). If the blinking does not stop, check to make sure the receiver is firmly connected and properly aligned to the base.

CLEANING AND MAINTENANCE

Unplug the AC Adapter from the wall. Then, use a dry, soft cloth to clean and dust the outside surfaces and the charging contacts on the Base. Do not immerse the Receiver in water.

SPECIFICATIONS

Transmission:	2.4 GHz Radio Frequency
Speakers:	2x3W Class D
Speaker Battery:	Built-in Lithium Ion Battery
Operating Range:	Over 30m (100 feet) in an open field
AC Adapter Power:	100-240VAC/50-60 Hz input; 5 VDC 1.5A output
Listening Time:	About 8 hours (at 50% volume)
Dimensions:	
Weight:	

(Final product may vary)

FCC INFORMATION (FOR U.S. CUSTOMERS ONLY)

Part 15 of FCC Rules Information

This device complies with Part 15 of the FCC rules. Operation is subject to the following two conditions: (1) this device may not cause harmful interference, and (2) this device must accept any interference received, including interference that may cause undesired operation. This equipment has been tested and found to comply with the limits of a Class B digital device, pursuant to Part 15 of FCC rules. These limits are designed to provide reasonable protection against harmful interference in residential installation.

This equipment generates, uses, and can radiate radio frequency energy and, if not installed and used in accordance with the instructions, may cause harmful interference to radio communications. However, there is no guarantee that interference will not occur in a particular installation. If this equipment does cause harmful interference to radio or television reception, which can be determined by turning the equipment

off and on, you may try one the following methods to correct the interference:

1. Where it can be done safely, re-orient the receiving television or radio antenna.
2. To the extent possible, relocate the television, radio, or other receiver, with respect to the cordless phone.
3. Connect the cordless phone AC adapter into a different electrical outlet.
4. Consult the dealer or an experienced radio/TV technician for help.

Modifications

Any modification not expressly approved by the manufacturer of this device could void the user's authority to operate the device.

This Class B digital device complies with Canadian ICES-003, RSS 201 Issue 8.