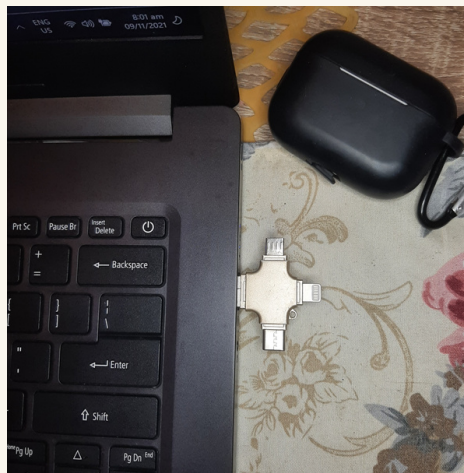


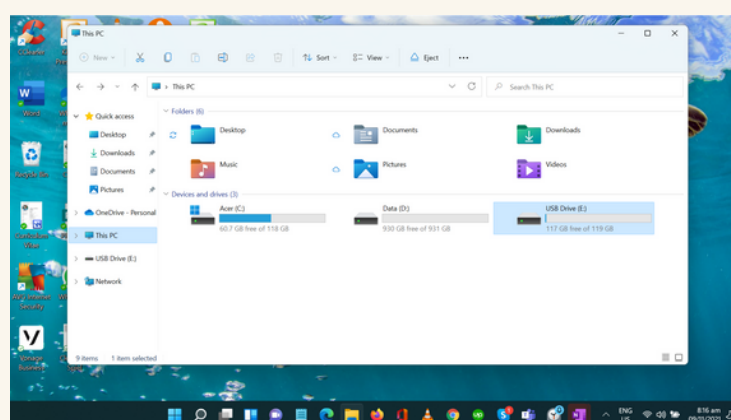
# HOW DO I FIND OUT HOW MUCH STORAGE SPACE WAS USED AND LEFT ON MY TRIPLEPLAY BOTH ANDROID AND IOS USING MY COMPUTER?

## A STEP-BY-STEP GUIDE

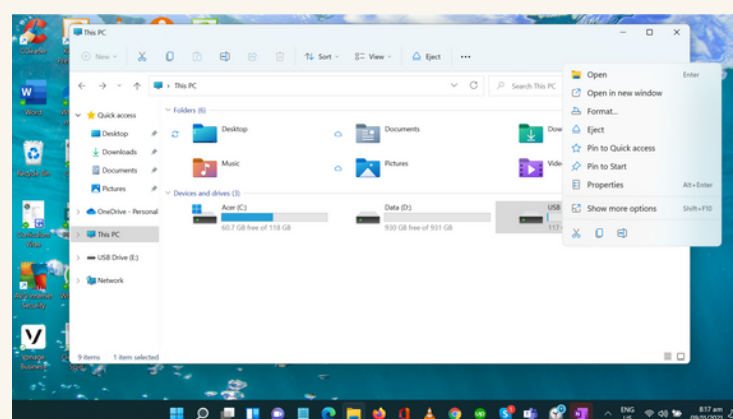
1. Connect/Plugin your Triple Play/ Datalogixx to your PC.



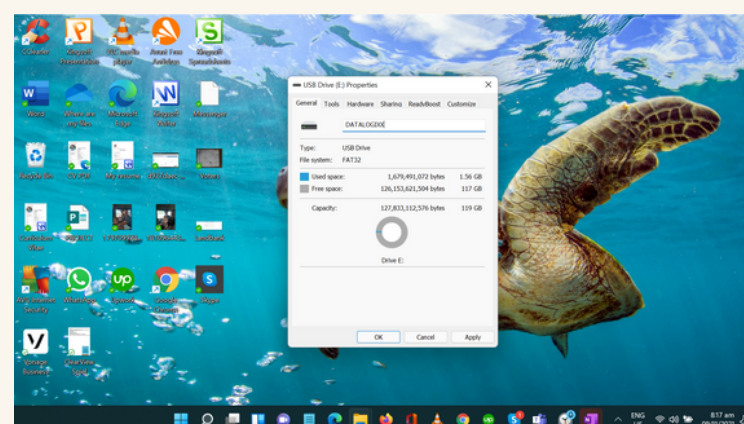
2. Go to your PC's "My Computer" and locate the new connected storage device.



3. Left click to view options and click properties.



4. Once populated, you can view your remaining, used storage, and total storage.



If you have questions, please contact a friendly support agent here: